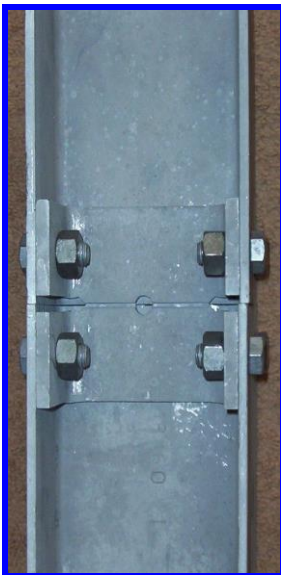


**W6X15 FUSE PLATE**



**W6X15 FUSE PLATE**



**S3x5.7 to W8x18  
4" Square Tube**

# **NEW PRODUCT**

## **DENT BREAKAWAY SIGN POST FUSE PLATE**

*Another Dent Product to Help Make our  
Highways Safer!!!*

- **OMNI-DIRECTIONAL  
FOR BREAKAWAY SIGN POSTS**
- **HELPS PREVENT WIND FAILURES AT FUSE  
PLATE AS EXISTING PRODUCTS NOW  
EXPERIENCE**
- **FITS ALL SIZE I-BEAM  
WIDE FLANGE, H COLUMN  
(MOUNTS TO INNER WEB)**
- **USES SAME MOUNTING HOLES AS MOST  
FUSE PLATES**
- **DENT FUSE PLATE BREAKS AND HINGES  
AFTER IMPACT FROM ANY DIRECTION**
- **SIMPLE TO INSTALL AND NO TORQUE  
REQUIREMENT**
- **WORKS ON ALL NEW & EXISTING SIGN  
POSTS**
- **FHWA APPROVED PER 350 CRITERIA  
TEST LEVEL 3**

**CONTACT: CLIFF DENT**

**TEL: 505.486.0476, FAX: 413.383.0681 E-MAIL: INFO@DENTBREAKAWAY.COM  
WEB SITE: WWW.DENTBREAKAWAY.COM PATENT PENDING & © 2004, 2005, 2006**

## *Dent Fuse Plate Installation Instructions*

1. Lay I-beam posts on a flat level surface with the web section of the I-beam facing upward.
2. Position the top and bottom sections of the I-beam so that they match each other in a straight position of the fully cup off I-beam.
3. Install the Dent Fuse Plate into the bottom of the web section of the I-beam at the splice section, making sure that the center of the fuse plate is evenly spaced in the center section of the I-beam on top and bottom.
4. On S-3 & S-4, install the bolts and washers through the drilled holes with the nuts on the outside of the I-beam. Leave them loose until all are installed, then impact tight. Install the nuts and washers of larger sizes with the nuts on the inside.
5. Tighten the nuts so that the wing sections of the Dent Fuse Plate bend out and make contact with the I-beam.
6. Repeat procedure numbers 4 & 5 on the reverse side of the post so that the Dent Fuse Plates are back to back.

### **IMPORTANT NOTE**

*When lifting the post into position, lift with the sign face side (or reverse) of the post upward. This will prevent bending in the center section of the Dent Fuse Plate. If lifting of the post with the web section upwards is required, add one of the old type fuse plates to the bolt thread that extend through the nuts and put another nut on this added plate. Remove this added plate when post is anchored in its upright position.*

